

[Skip to main content](#)

r/zerotier



Search in r/zerotier

[Log In](#)

r/zerotier • 5 yr. ago

randomprocess42



Default route

Networking & Routing

Hello all. I have a zero tier setup, but for reason, about 10 seconds after joining the network, zero tier adds a route to 0.0.0.0, gw 0.0.0.0, mask 0.0.0.0 on the ZeroTier interface. Prior to this route everything works fine for the ten seconds or so between the network being joined before this route being added. Any idea where this is coming from? Route delete won't let me kill it either.



5



4



Share

[+ Add a comment](#)Sort by: **Best** ▾

Search Comments



opsth • 5y ago

On your client you have chose to route via zerotier but you haven't setup a default route for your zerotier network (zerotier controller). You have just to uncheck Route Via Zerotier on your client and it will fine.



2



Reply



randomprocess42 OP • 5y ago

I have my local.conf set to allowdefault=0 and I have used the zerotier-cli set default to zero also.

Is there somewhere else on the client I need to turn off default routes (Linux box, no GUI interface)



1



Reply



2 more replies

New to Reddit?

Create your account and connect with a world of communities.

[Continue with Google](#)[Continue with Email](#)[Continue With Phone Number](#)

Skip to main content



Log In



r/UNO • 1 mo. ago

Refund status

7 upvotes · 18 comments



r/mh4u • 3 mo. ago

Anyone know why this would happen?



26 upvotes · 10 comments



r/NOAA • 3 mo. ago

No Alerts

6 upvotes · 10 comments



r/pizzahutemployees • 5 mo. ago

NO MORE DRIVERS

36 upvotes · 57 comments



r/SquidsGetColdOutside • 3 mo. ago

Do people still ride here?????

45 upvotes · 6 comments



r/NuclearNightmare • 2 mo. ago

Is this a glitch?



22 upvotes · 5 comments



r/skype • 2 mo. ago

Notification Issues

6 upvotes · 13 comments



r/superautopets • 3 mo. ago

Is this a bug or misunderstanding



38 upvotes · 7 comments

Skip to main content

Log In



6 upvotes · 14 comments

 r/armmj • 2 mo. ago

I need some help understanding - I'm totally lost on how or even IF I should get my card.

9 upvotes · 18 comments

 r/WakeTech • 1 mo. ago

Refund

6 upvotes · 9 comments

 r/superautopets • 2 mo. ago

What is this glitch..



44 upvotes · 6 comments

 r/montclair • 1 mo. ago

Refund status

5 upvotes · 39 comments

 r/TribeNine • 1 mo. ago

Mobile Issues

6 upvotes · 9 comments

 r/nunumains • 1 mo. ago

Welp that didn't last long did it (they fixed the "feature")



25 upvotes · 8 comments

 r/flightrising • 2 mo. ago

Returning to FR after Many Many Moons

33 upvotes · 13 comments

 r/10thgenaccords • 2 mo. ago

Speed limit



Skip to main content

Log In

I like the new update



37 upvotes · 12 comments

r/Septa • 1 mo. ago

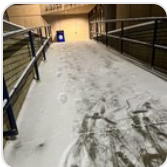
Route name changes



45 upvotes · 67 comments

r/uakron • 1 mo. ago

10/10 accessibility great job



54 upvotes · 15 comments

r/VimmsLair • 2 mo. ago

Is there a way to do this?



48 upvotes · 9 comments

r/towersofaghasba • 4 mo. ago

Can't figure out what to do.



5 upvotes · 8 comments

r/AKAggradChapter • 4 mo. ago

Connections

88 upvotes · 12 comments

TOP POSTS

Reddit

reReddit: Top posts of July 19, 2020

Reddit



Log In



reReddit: Top posts of 2020

[Reddit Rules](#) [Privacy Policy](#) [User Agreement](#) [Reddit, Inc. © 2025. All rights reserved.](#)