

[Skip to main content](#)

r/frigate\_nvr



Search in r/frigate\_nvr

[Log In](#)

r/frigate\_nvr • 4 mo. ago

quick-altf4



## Setup getting stuck at go2rtc healthcheck

I am able to access my docker container via portainer, but not able to access the Frigate dashboard on the same IP at the proper port. Everything in my logs looks good until I get to go2rtc healthcheck. After that it just repeats what appears to be a messed HTTP request. Any idea what the request source might be?

```
s6-rc: info: service s6rc-fdholder: starting
s6-rc: info: service s6rc-oneshot-runner: starting
s6-rc: info: service s6rc-oneshot-runner successfully started
s6-rc: info: service fix-attrs: starting
s6-rc: info: service s6rc-fdholder successfully started
s6-rc: info: service fix-attrs successfully started
s6-rc: info: service legacy-cont-init: starting
s6-rc: info: service legacy-cont-init successfully started
```

[Read more](#) ▾

1



5



Share

[Single comment thread](#)[See full discussion](#)quick-altf4 **OP** • 4mo ago

Wow. Turns out I just needed to poke around more. Portainer was https, but frigate was just http. Thank you for the help!



Reply



hawkeye217 • 4mo ago

Great, glad it's working!



Reply



### New to Reddit?

Create your account and connect with a world of communities.

[Continue with Google](#)[Continue with Email](#)

[Skip to main content](#)

r/

[Log In](#)

By continuing, you agree to our [User Agreement](#) and acknowledge that you understand the [Privacy Policy](#).



r/AutoTuga • 27 days ago

## AutoDoc

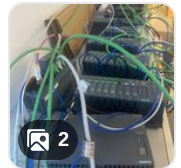
7 upvotes · 17 comments



r/PLC • 4 mo. ago

## Test setup

60 upvotes · 14 comments



r/codeforces • 3 mo. ago

## My code is totally fine but ....

21 upvotes · 15 comments



r/codeforces • 2 mo. ago

## Worst feeling ever!

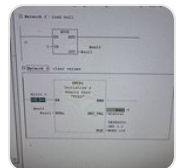
60 upvotes · 19 comments



r/PLC • 2 mo. ago

## Why isn't this working?

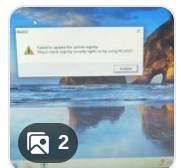
34 upvotes · 22 comments



r/PLC • 6 mo. ago

## Help!

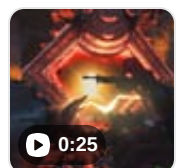
24 upvotes · 29 comments



r/Blackops4 • 6 mo. ago

## Half way through the EE and this happens.


68 upvotes · 35 comments



Skip to main content

Log In

29 upvotes · 9 comments

 r/frigate\_nvr • 2 mo. ago

Face detection



102 upvotes · 76 comments

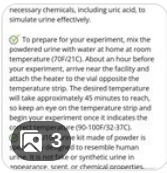
 r/ADHD\_Programmers • 1 mo. ago

Anyone else struggles with system design interviews?

64 upvotes · 18 comments

 r/QuickFix • 2 mo. ago

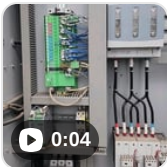
Confusion about TestClear



4 upvotes · 31 comments

 r/PLC • 1 mo. ago

Any guesses for what could be causing the intermittent errors.



1K upvotes · 153 comments

 r/codeforces • 3 mo. ago

Feeling dumb

27 upvotes · 7 comments

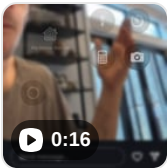
 r/cybersecurity • 1 mo. ago

Implementing zero trust, break everything?

99 upvotes · 56 comments

 r/dubstep • 1 mo. ago

Testing to find id



107 upvotes · 49 comments

Skip to main content



Log In

488 problems	476 problems	51 problems
23 days	23 days	9 days

25 upvotes · 6 comments



r/frigate\_nvr • 2 mo. ago

Detection model must have been trained at the North Pole



109 upvotes · 18 comments



r/frigate\_nvr • 3 mo. ago

Understanding if higher resolution means better detections

9 upvotes · 11 comments



r/CHROMATOGRAPHY • 6 mo. ago

After half a day troubleshooting



70 upvotes · 21 comments



r/lowvoltage • 4 mo. ago

I love headend work



55 upvotes · 14 comments



r/fema • 2 mo. ago

Deployments still happening?

9 upvotes · 38 comments



r/ArchitectsUK • 2 mo. ago

Having trouble



41 upvotes · 14 comments



r/OnlyAICoding • 2 mo. ago

Essential Best Practices (🔴 Must-Do) when working on AI Coding Platforms

37 upvotes · 14 comments



r/talesfromtechsupport • 2 mo. ago



Log In