

[Skip to main content](#)

r/Comcast\_Xfinity



Search in r/Comcast\_Xfinity

[Log In](#)

r/Comcast\_Xfinity • 5 mo. ago

mostlynights



## Arris S34 is finally working for next-gen fast upload speeds (with a lot of effort)

**X** Official Reply

For the past couple months I have been trying to get the Arris S34 to support the next-gen fast upload speeds, and with some help from the reddit support reps, I finally had success tonight! I have the 800/100 plan, but my upload speed had been limited to about 23.9 (20 + 120% overprovision). Here is the [old/slow](#) speed test and the [new/fast](#) speed test result. Woohoo!

I am posting some troubleshooting steps in the hope that other S34 owners can point support reps to this thread and get next-gen speeds. Since I have the 800/100 plan, I'll use that example below, but please substitute your actual plan speeds.

1. **Eligibility:** Make sure your address is eligible for the next-gen speeds. In my case, xfinity did some upgrades in my neighborhood and the internet was down periodically for a whole day, and then a few months later, I got an email indicating I was eligible.

2. **Hardware:** Sometimes support reps think the Arris S34 is not next-gen compatible because they are using an

[Read more](#) ▾

23

16



Share

Add a comment

Sort by: **Best** ▾

Search Comments

**AutoModerator** MOD • 5mo ago • **JELLEYNEONSHARK** • 5mo ago

Guess I must have been lucky. Plugged in my new modem and got 1500 down and 300 up right out the gate. Didn't need to do anything. Glad it's working for you though and appreciate you adding the guild to help people in the future

5 Reply ...

**mostlynights** OP • 5mo ago

That's awesome! Hopefully they are starting to get their act together (in some areas or for some plans).

2 Reply ...



[Skip to main content](#)[Log In](#)

the modem web UI, I believe you should see at least one (maybe two) OFDMA downstream channels and one "OFDMA" upstream channel (in addition to all the other QAM channels), and they should be in "Locked" status. Example from my modem is [here](#).

And the Event Log tab in the UI doesn't work in Chrome... gotta use Edge, lol.

3   [Reply](#)   ...



**Main-Pie5112** • 5mo ago

So I figured out why the event log disappears for many. Even across browsers!

The event log itself is fetched by a JS file called `eventlog.js`. There's a filter rule against this in the EasyPrivacy list used by uBlock Origin. If you manually override this, then the event log will function again.

2   [Reply](#)   ...

+ 3 more replies



**shortyg83** • 5mo ago

If there is a Comcast agent who is willing to try and get mine to work again please let me know. My plan is for 2000/400 but I am only getting 1200/40. I have had no luck with service reps yet.

2   [Reply](#)   ...



**mostlynights** OP • 5mo ago

To get their attention, you'd probably need to start a new post and then send modmail.

1   [Reply](#)   ...



**lunarstudio** • 4mo ago

I've been receiving T3 errors and had a tech out yesterday. Tech said he didn't find anything but tightened the connections (everything runs underground here) and the SNR improved drastically. He insisted at first that no consumer modem was capable of 350 mbps upload speeds and I told him that is what I was getting. He still didn't fix these ongoing issues. He mentioned random disconnects at this point could be due to ingress from someone else's modem.

It just goes to show that even the techs are clueless these days.

2   [Reply](#)   ...

+ 1 more reply



**RallyCarTurbo4** • 3mo ago

[Skip to main content](#)[Log In](#)

Wonder when the S34 will be considered a recommended device. It's compatible with the next-gen speed devices, but not listed as a recommended/optimized device.

↑ 1 ↓ [Reply](#) ...

 r/tmobile • 20 days ago

### Layoffs galore

374 upvotes · 123 comments

 r/tmobile • 15 days ago

### Frustrated Customers

103 upvotes · 23 comments

 r/tmobile • 16 days ago

### Do's and Dont's

87 upvotes · 37 comments

 r/tmobile • 19 days ago

### T Mobile won't cancel my dead daughter's account

1.9K upvotes · 156 comments

 r/tmobile • 23 days ago

### Stop Signing up for Rocket Money

364 upvotes · 77 comments



r/Comcast\_Xfinity • 10 days ago

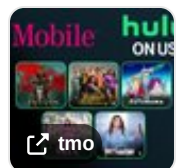
### Has anyone tried to talk to a live agent at Xfinity recently? It is NUTS.

147 upvotes · 87 comments

 r/tmobile • 28 days ago

### Here's How To Redeem Hulu "On Us" For Existing T-Mobile Customers In 2025

145 upvotes · 107 comments



Skip to main content

Log In



125 upvotes · 50 comments

r/tmobile • 23 days ago

To Those Thinking Of Switching From Verizon to T-Mobile - My Experience

129 upvotes · 92 comments

r/tmobile • 15 days ago

T-Mobile Will No Longer Offer A Price Lock For Fiber Customers



279 upvotes · 63 comments

r/tmobile • 7 days ago

T-Mobile SpaceX LTE Initial Impressions



114 upvotes · 80 comments

r/Comcast\_Xfinity • 5 mo. ago

On the X2 Plan but still getting slower upload speeds with an approved modem

1 upvote · 6 comments

r/thinkpad • 6 mo. ago

T14s Gen 4 AMD is great! But there is a cursor lagging issue...

7 upvotes · 8 comments

r/ROGALLY • 6 mo. ago

LPT: Get amazing and smooth performance (120fps) with nearly any game. [Lossless Scaling+RTSS]

231 upvotes · 86 comments

r/ManorLords • 5 mo. ago

Purely from a technical/creative perspective, 0.7.987 (and I assume the newest beta patch) is almost entirely a downgrade and I hope these things get ironed out till the main-branch release. This post...

101 upvotes · 46 comments

r/WireGuard • 6 mo. ago

New updates on WGDashboard (2024 August Release 1 - v4.0)

[Log In](#)

## Released Helgobox 2.16.4: A more polished Playtime and lots of ReaLearn keyboard input love

5 upvotes · 1 comment



r/DnDHomebrew • 5 mo. ago

## Want a Code-Free VTT Designed For Homebrew? Now 1700%+ Funded and In It's Final 24 Hours!

4 upvotes · 2 comments



r/buildapc • 6 mo. ago

## (SSD Help) CrystalDiskInfo shows my 980 Pro 2TB at 97% health after 1 year, even with less hours and writes than my 970 EVO+ 2TB, which is still 100% health after 2 years. Cause for worry?

1 upvote · 3 comments



r/buildapc • 6 mo. ago

## Need help deciding mobo for future-proofing my new PC build! (NVLink)

6 comments



r/EpicSeven • 5 mo. ago

## E7Calc 2.0 finally out of beta! Also updated the Epic 7 Damage Calculator to add Revna, Harsetti, Fenris, and Renewed Will. And updated with balance patch changes

91 upvotes · 11 comments



r/CODWarzone • 6 mo. ago

## We finally reached a point where DLSS and Image Scaling technology doesn't sacrifice quality and gives you a HUGE BOOST of FPS! A few tips for AMD owners.

3 upvotes · 6 comments



r/GODUS • 6 mo. ago

## Hello Devs, can you please add a change log to the update page on the google play store and the apple app store ? Its seems the settlement radius glitch has been fixed... But there is no official way to confir...

19 upvotes