

[Skip to main content](#)

r/unRAID



Search in r/unRAID

[Log In](#)

r/unRAID • 3 yr. ago

XxNerdAtHeartxX



## Do You utilize CPU Pinning?

I've had a few times where my cpu locked up due to processes like kswapd0 or shfs taking over the whole cpu, so I pinned all of my containers to cpus, just so nothing could take over everything again.

Now that I run 2 vms and about 70 containers, with 50 being up at all times, managing cpu pinning has turned into a pain.

Do you find it worth it for all apps, or do you only pin specific apps that may end up being pretty non-nice with CPU processes? I think I need to rethink how I approach utilizing it.

Of course, the alternative is to not run so many things, but wheres the fun in that.



26



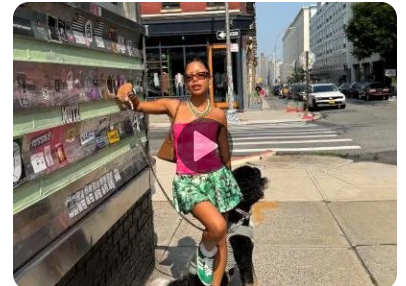
25

[Share](#)

adobe • Official • Promoted



Easily clean up your photos in a touch with Generative Remove in Adobe Lightroom.

[Learn More](#)[adobe.com](#)[+ Add a comment](#)Sort by: **Best** ▾

Search Comments



robobub • 3y ago

kswapd? Did you enable swap space? Swap can be a huge bottleneck, with lots of contention from pages being moved in both directions (to and from disk).

Disabling that and either running less processes or getting more memory would help.



8



Reply

XxNerdAtHeartxX [OP](#) • 3y ago

[Skip to main content](#)[Log In](#)

start.

↑ 1 ↓ ○ Reply ...

⊕ 1 more reply



**iSecks** • 3y ago

I use pinning as fake isolation. Nothing uses core 0 except unRAID, Plex pinned on 1&2, everything else "pinned" on the remainder.

↑ 6 ↓ ○ Reply ...

⊕ 1 more reply



**ErikRedbeard** • 3y ago

It depends.

If I know there's a chance for high cpu usage then I'll pin the container else I just leave it unpinned.

Like fe game servers, media server (emby) and media converter (tdarr) I'll pin since I expect high cpu usage or in the case of game servers I expect errors that just start slamming the cpu.

If you really want to pin every container I'd suggest to pin the low usage containers to all but the 1st one or two cores, since that's what unraid prefers to use itself. And then have the thread handler handle what core inside the pinned ones to use.

↑ 4 ↓ ○ Reply ...



**Pixelplanet5** • 3y ago

i dont pin anything as nothing except my VM will ever be able to utilize all cores anyways.

im also only running what i really need so thats like 15 containers running at all times and 5 that i fire up when i need them.

↑ 3 ↓ ○ Reply ...



**NearlyPerfectd** • 3y ago

I had to use it on one container with rtorrent. It didn't like to see 64 cores and had some strange freezes until I pinned a few.

↑ 2 ↓ ○ Reply ...

⊕ 1 more reply



**grtgbIn** • 3y ago

Yes.

[Skip to main content](#)[Log In](#)**RoamingBison** • 3y ago

I haven't messed around with it yet, but I'm only running Docker containers right now. I don't think my server is consistently loaded up enough to bother.

↑ 1 ↓ [Reply](#) ...

**A\_TeamO\_Ninjas** • 3y ago

I tried pinning out different Dockers in the past but I didn't really see a performance impact (positive or negative). As long as Plex can use all cores, I'm happy lol.

↑ 1 ↓ [Reply](#) ...

**AnnHashaway** • 3y ago

I pin backup utilities so they do not take over the system when indexing large data sets.

I used to mess around a lot more with it, like making sure a few cores were only ever used by PLEX, but it really became more of a pain managing it than it was worth.

↑ 1 ↓ [Reply](#) ...

**radwimps** • 3y ago

Only VMs and one slightly misbehaving docker container that I require but tends to shit itself occasionally and bog the whole system down if I let it have every core.

↑ 1 ↓ [Reply](#) ...

**ChrisRK** • 3y ago

I've had my old build locked up by kswapd as well, even with CPU pinning set. I believe it was one of the docker containers I ran that used swap to not eat up RAM but ended up crashing my system. It went away with the 6.9 beta but that might just have been a container update as I don't keep track of them.

↑ 1 ↓ [Reply](#) ...

**extrobe** • 3y ago

Not for everything, but for a couple of containers where they have the potential to affect user experience. Eg, Sabnzb is pretty cpu intensive when repairing, to the point it can affect other workloads, but it's also not time sensitive, so I pin it to a handful of cores

↑ 1 ↓ [Reply](#) ...

**craigmontHunter** • 3y ago

[Skip to main content](#)[Log In](#)

slower hardware hang around.

↑ 1 ↓ ○ Reply ...



**Technical\_Moose8478** • 3y ago

I pin vms. Everything else I just let run, but I DO have 32 threads to play with so it's rarely an issue.

↑ 1 ↓ ○ Reply ...

✓ [View more comments](#)



r/linux4noobs • 3 yr. ago

### How to free memory(ram)?

4 upvotes · 13 comments



r/unRAID • 11 days ago

### What The Shuck! Server HDDs for Noobs

117 upvotes · 31 comments



r/linux • 3 yr. ago

### Does it make sense to use 'auto renice' like daemons if your typical workflow use less than 25% CPU most of the time?

9 upvotes · 13 comments



r/vuejs • 3 yr. ago

### Are frequent vuex mutations ok?

3 upvotes · 15 comments



r/unRAID • 8 days ago

### After six months with the arrs, I finally increased my number of usenet connections in Sabnzbd...

116 upvotes · 101 comments



r/devops • 3 yr. ago

### laC for a small set of bare metal servers

2 upvotes · 7 comments



r/aws • 3 yr. ago

[Skip to main content](#)[Log In](#) r/chia • 3 yr. ago

### Can I limit Ram Usage of Chia and Forks?

4 upvotes · 27 comments

 r/unRAID • 1 mo. ago

### Get rid of the external USB drive that seems to die all the time, easily

163 upvotes · 113 comments

 r/linuxquestions • 3 yr. ago

### Is it possible to assign labels to windows in GUI? Possible to put groups of windows "to sleep"?

3 upvotes · 11 comments

 r/sysadmin • 3 yr. ago

### Domain Controllers Needed - Opinion

1 upvote · 10 comments

 r/unRAID • 14 days ago

### Why did you choose to pay for UnRAID?

122 upvotes · 328 comments

 r/unRAID • 22 days ago

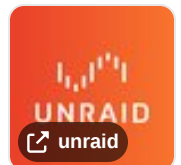
### Unraid has been knowingly pushing out updates with broken NFS implementation since at least 6.12.10

273 upvotes · 195 comments

 r/unRAID • 22 days ago

### Unraid OS Version 7.0.0-rc.2 now available

173 upvotes · 83 comments

 r/unRAID • 27 days ago

### My UnRAID Theme Customization

140 upvotes · 34 comments



[Skip to main content](#)[Log In](#)

106 upvotes · 79 comments



r/unRAID • 1 mo. ago

### Just completed my first system move



130 upvotes · 15 comments



r/unRAID • 5 days ago

### Just bought a refurbished 12TB Ironwolf: 99% of cycle 2/2 of Preclear almost done! 🎉 98h later, so far so good!



94 upvotes · 53 comments



r/Plex • 9 days ago

### Plex Pass User

195 upvotes · 41 comments



r/unRAID • 24 days ago

### Can't wait to get this in the server



364 upvotes · 131 comments



r/zfs • 3 yr. ago

### Different raid levels on the same disk.

5 upvotes · 15 comments



r/archlinux • 3 yr. ago

### System slows to a crawl during package updates

16 upvotes · 15 comments



r/Plex • 20 days ago

### Plex account hacked

191 upvotes · 153 comments



r/Plex • 28 days ago

### UPGRADED: 3D Printed Plex Server



Log In

---

## Bought Plex Pass Lifetime to support Plex

243 upvotes · 107 comments

---

### TOP POSTS



Reddit

**reReddit: Top posts of October 16, 2021**

---



Reddit

**reReddit: Top posts of October 2021**

---



Reddit

**reReddit: Top posts of 2021**

---